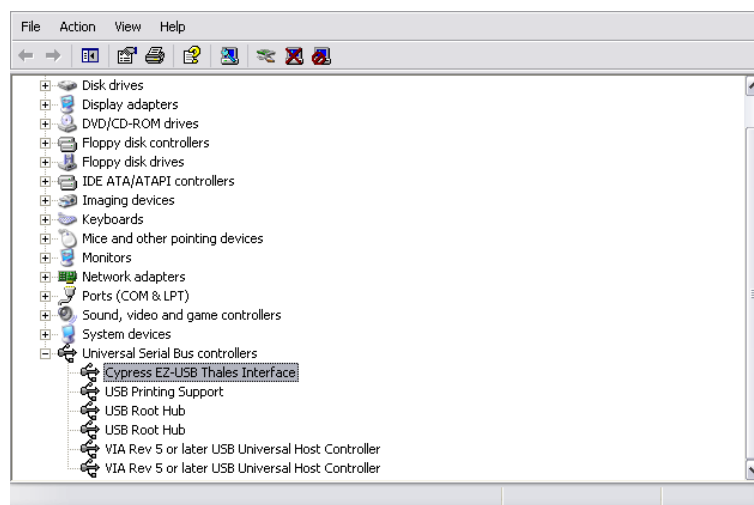


Update of the USB Device Driver under Windows XP

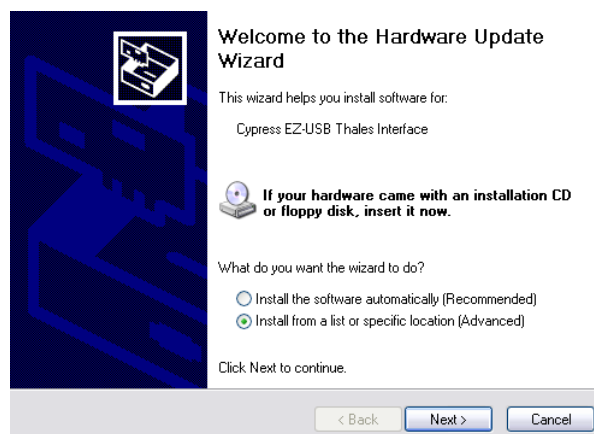
From Thales version 3.15 on we are shipping a new USB device driver for WindowsXP and Windows2000 (*CD-ROM: thales\usb\WinXP*). This driver is not running under Windows98. For Windows98 the old USB device driver (*CD-ROM: thales\usb\Win98*) is used. New driver installations are running automatically with the Thales installation.

If you have got an old USB device driver (*Cypress EZ-USB Thales Interface*) installed on your computer the new driver will be installed but not activated by Windows. To activate it manually proceed as follows:

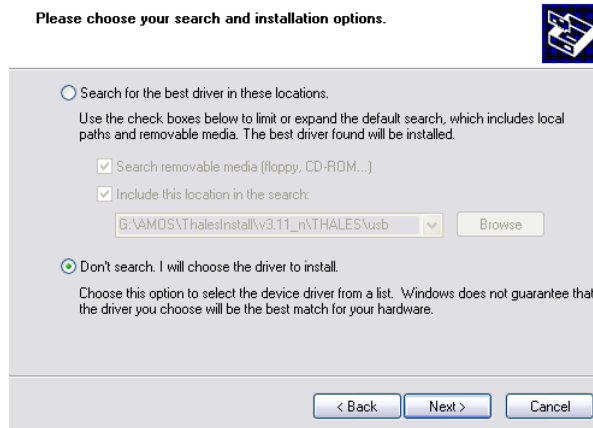
Open *System Properties -> Hardware -> Device Manager*



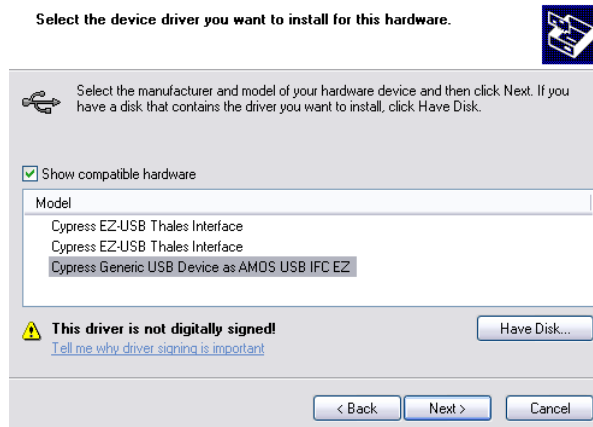
Open the *Universal Serial Bus Controllers* subfolder, right click on the entry *Cypress EZ-USB Thales Interface*, and select the entry *... Update Driver*.
On the following page select *Install from a list or specific location* and click *Next*.



Select *Don't search*. I will choose the driver to install and click *Next*.



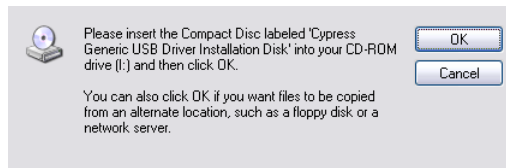
Select *Cypress Generic USB Device as AMOS USB IFC EZ* from the following list and click *Next*.



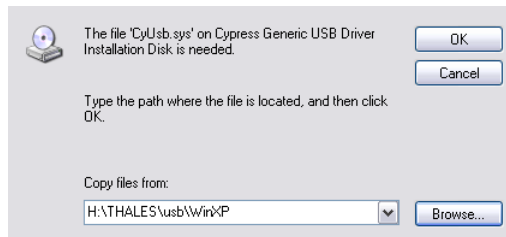
When the following page appears click on *Continue Anyway* to proceed.



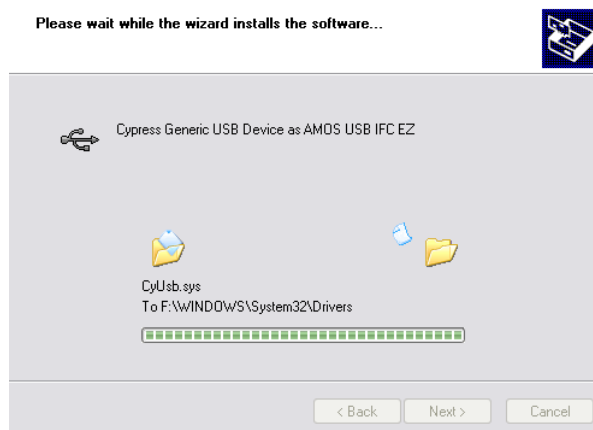
Insert the Thales Installer CD-ROM into your CD-ROM drive and click *OK* in the following info box.



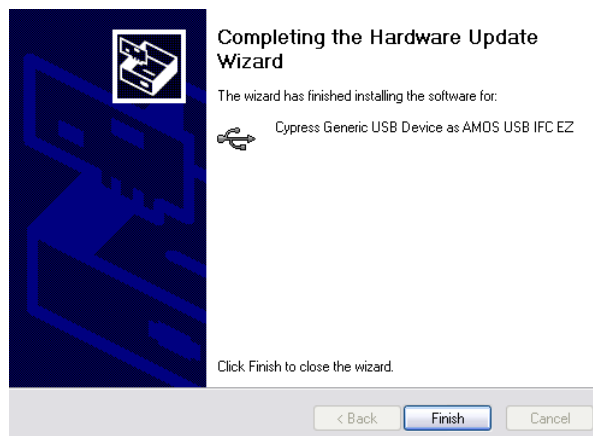
Click on *Browse* and navigate to *CD-ROM: thales\usb\WinXP*.



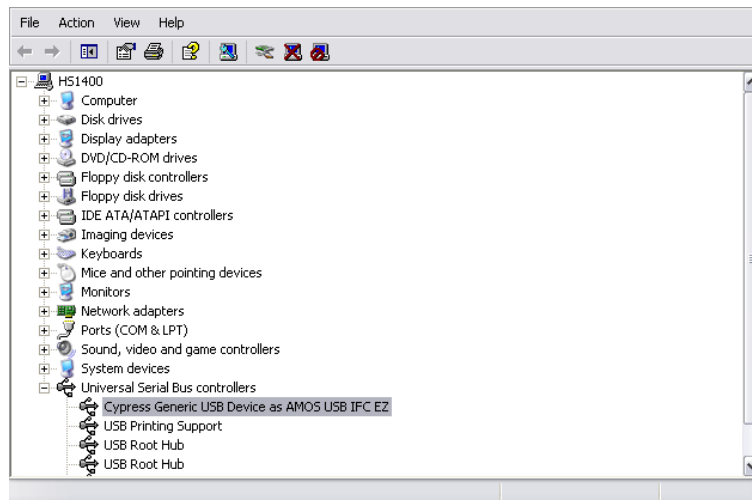
Then click *OK* and the driver will be copied and installed.



In the following window click *Finish* to finish the USB device driver installation.



The Device Manager entry in the Universal Serial Bus controllers section have to read *Cypress Generic USB Device as AMOS USB IFC EZ* now.



Finally, you have to replace the interface library file used by the IM communication software *term.exe*. To do that open the file *c:\flink\usb.ini* with the Windows Notepad by double-clicking on it. Look for the line *HALDLL=C:\FLINK\usbhal2k.dll*.

```
*****
; thales windows driver basic adjustments
*****
[SETUP]
SERNUM=65535
wallpaper="c:\flink\pics\wallpaper.bmp"
; **** Helpfile (actually not in use) ****
helpfile=c:\flink\fhhelp.hlp
USBWDTIME=1000

; *****
; Actual version of Thales- and Termsoftware
; *****
TermVersion=126.06.09.15
ThalesVersion=3.14
; *****
; values for 'devicetype'
; 1=IM6/6e workstation
; 2=Thalesbox
; 0=Invalid or temporary (not involved/listed during setup)
; *****
Devicetype=1

; **** select driver for communication interface ****
; **** flink isa card:      flhal2k.dll
; **** lpt dongle:        lpthalcp.dll
; **** lpt+com cable:     lpthal2k.dll
; **** TCP/IP remote:     nethal2k.dll
; **** usb:               usb2hal.dll
HALDLL=C:\FLINK\usbhal2k.DLL
; **** TCP/IP remote configuration ****
; if HALDLL=nethal*.dll then configure the slave,
; identified as REMOTEIPA=internet protocol address
; with the according REMOTEHAL as HALDLL
REMOTEHAL=c:\flink\lpthalcp.dll
REMOTEIPA=192.192.1.1
```

Change the name *usbhal2k.dll* into *usb2hal.dll*. The line must read as follows:

```
*****
; thales windows driver basic adjustments
*****
[SETUP]
SERNUM=65535
WallPaper="c:\flink\pics\wallpaper.bmp"
; **** Helpfile (actually not in use) ****
HelpFile=c:\flink\fhelphelp.hlp
USBWDTIME=1000

*****
; Actual version of Thales- and Termsoftware
*****
TermVersion=126.06.09.15
ThalesVersion=3.14
*****
; Values for 'devicetype'
; 1=IM6/6e workstation
; 2=Thalesbox
; 0=Invalid or temporary (not involved/listed during setup)
*****
Devicetype=1

; **** select driver for communication interface ****
; **** flink isa card:      flhal2k.dll
; **** lpt dongle:       lpthalcp.dll
; **** lpt+com cable:    lpthal2k.dll
; **** TCP/IP remote:    nethal2k.dll
; **** usb:              usb2hal.dll
HALDLL=C:\FLINK\usb2hal|.DLL

; **** TCP/IP remote configuration ****
; if HALDLL=nethal*.dll then configure the slave,
; identified as REMOTEIPA=internet protocol address
; with the according REMOTEHAL as HALDLL
REMOTEHAL=c:\flink\lpthalcp.dll
; REMOTEIPA=192.192.1.1
```

Save the changes and exit the Notepad.

Now, the update is completed and you will be able to open the Thales application in the same way than before.